



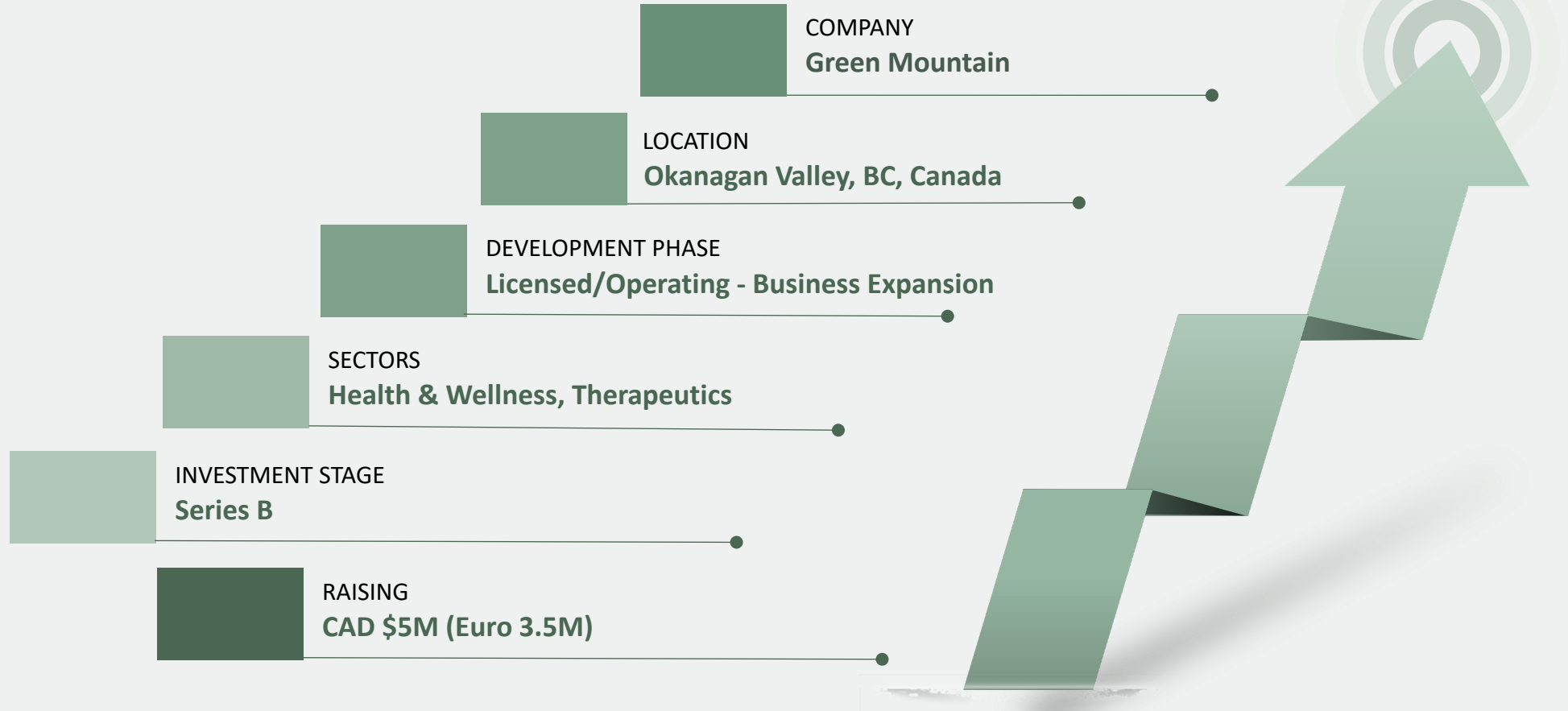
Green Mountain



Investor Presentation



AT A GLANCE





OPERATING & CASHFLOWING

- » Fully licensed – Cultivation, Processing and Extraction.
- » Okanagan Valley location for optimal grow climate.
- » Supported by one of the largest Indigenous communities in Canada.
- » Focus on adult-use market profitability while developing medical division.





PURPOSE OF FUNDS



- Enhance Facility
- Introduce certified organic outdoor cultivation
- Establish medical platform
- Acquire/Develop effective formulations



GLOBAL TRENDS

- » **US:** Medical cannabis legal in 38 states; 24 states allow recreational use. Federal legalization anticipated by 2025.
- » **Europe:** Rapidly evolving landscape—medical use widely accepted, recreational use increasingly legalized or decriminalized including Germany, Malta, Switzerland, Czech Republic, Portugal, Holland, Spain...
- » **Canada's Leadership:** Dominant force in recreational, medical advancements, exports, and trials. 8 of top 10 global revenue-generating companies are Canadian.
- » **Market Projections:** Global cannabis markets to hit \$198B revenue by 2032 (22% CAGR)¹. Canadian market set to grow 60% to \$8.8B by 2027².

1.Spherical Insights, June 2023.

2.Brightfield group; the period represented is from 2022 to 2027.



THE CASHFLOW POSITIVE CHALLENGE

“Only 20% of Canadian cannabis producers are cashflow positive” *

Contributing Factors

INVENTORY STRAIN



TAXATION BURDEN



BLACK MARKET
COMPETITION



Operational Hurdles

OVERSIZE FACILITIES



LEGACY GROWERS



INEFFECTIVE MANAGEMENT



* Canadian Cannabis Exchange Report – October 2023 edition

GREEN MOUNTAIN CASHFLOW POSITIVE SINCE NOV '23

before transitioning to higher margin processed products





CULTIVATION & SALES

Science and Technology Driven



Innovative Sales Model

Transitioning from low-margin to higher-margin products without increasing workforce or overhead costs.



Operational Excellence

High levels of automation in combination with Goldilocks sized facility, experienced ops team and optimal resource utilization.



Growth Trajectory

Rapid and sustained growth in 2023 evidenced by a doubling of monthly yields coupled with THC potency reaching in excess of 30%.

Explosive sales growth anticipated in 2024 due to:



Facility improvements and further increasing yields (targeting 150,000 gms/month); and

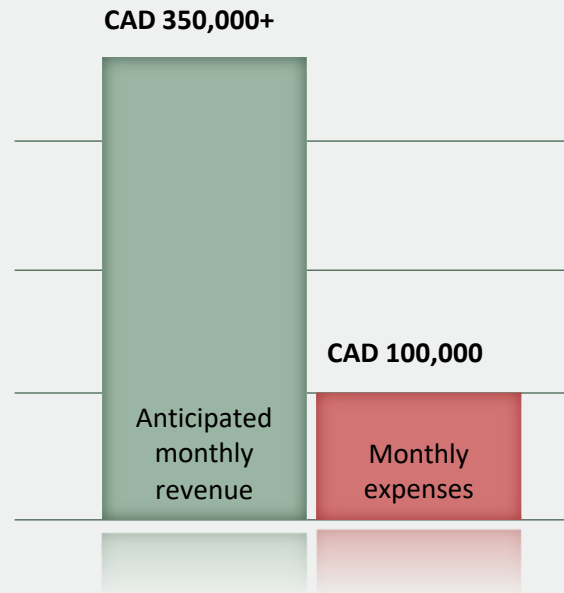


Sales of higher margin products permitted by processing license granted Sept '23.



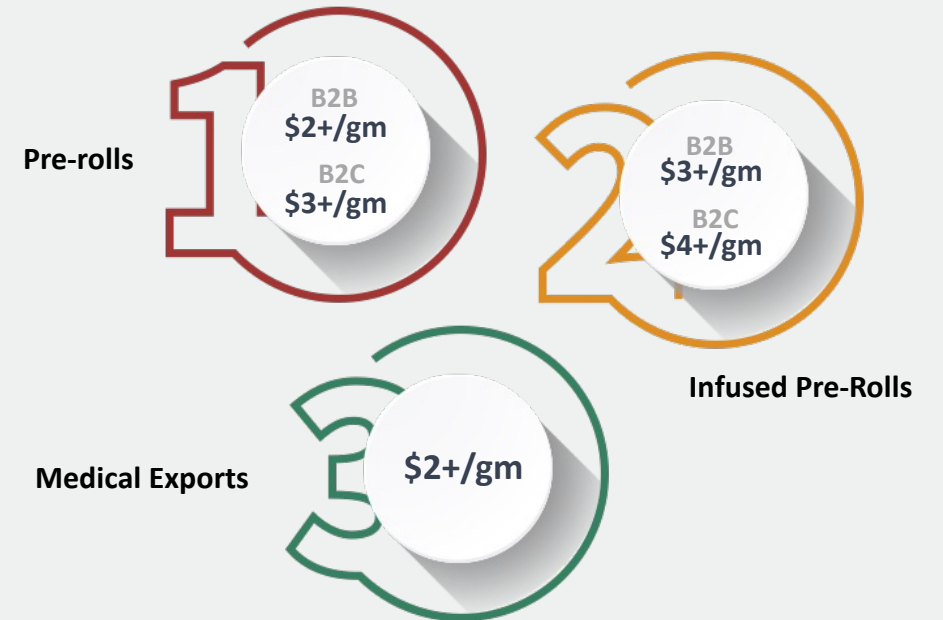
REVENUE PROJECTIONS 2024

Projected Revenue (Recreational Division)



Drivers of Revenue Growth

Increased yields plus sales of higher-margin products (Pre-rolls, Infused Pre-Rolls, Export)



Margin Boost & Sales Expansion:

- Transitioning to higher-margin **B2C** sales in British Columbia
- **B2C** sales @ \$3+/gm (Pre-Rolls) and \$4+/gm (Infused Pre-Rolls)



KEY DIFFERENTIATORS

Collaborative ERP model and skilled leadership ensuring competitive edge even in a challenging market environment.

LOW OVERHEAD



CERTIFICATE OF ANALYSIS			
Client Information		CDA Information	
Green Mountain Health Alliance 700 Hwy 26 Kamloops, Canada, V2Y 3K2		CDA Number: 246312_3068_PARD5443 CDA Date: 02-Jan-2024 Analysis Request ID: PARD5443	
Sample Information		Sample Processing Data	
Sample Name: 0142024-041-028 Sample ID: 0243PL0010 Laboratory ID: PWT-70000 Analysis Ref.: PWT-AM-019		Sample Processing Date: 02-Jan-2024 Processing Temperature: 21°C Analysis Date: 02-Jan-2024	
Cannabinoid Profile			
Component	Results (mg/ml)	Results (mg/g)	LOG10
CBG	16.200	16.200	0.000
CBG ₁	16.274	16.274	0.000
CBG ₂	16.200	16.200	0.000
CBG ₃	16.200	16.200	0.000
CBG ₄	16.200	16.200	0.000
CBG ₅	16.200	16.200	0.000
CBG ₆	16.200	16.200	0.000
CBG ₇	16.200	16.200	0.000
CBG ₈	16.200	16.200	0.000
CBG ₉	16.200	16.200	0.000
CBG ₁₀	16.200	16.200	0.000
CBG ₁₁	16.200	16.200	0.000
CBG ₁₂	16.200	16.200	0.000
CBG ₁₃	16.200	16.200	0.000
CBG ₁₄	16.200	16.200	0.000
CBG ₁₅	16.200	16.200	0.000
CBG ₁₆	16.200	16.200	0.000
CBG ₁₇	16.200	16.200	0.000
CBG ₁₈	16.200	16.200	0.000
CBG ₁₉	16.200	16.200	0.000
CBG ₂₀	16.200	16.200	0.000
CBG ₂₁	16.200	16.200	0.000
CBG ₂₂	16.200	16.200	0.000
CBG ₂₃	16.200	16.200	0.000
CBG ₂₄	16.200	16.200	0.000
CBG ₂₅	16.200	16.200	0.000
CBG ₂₆	16.200	16.200	0.000
CBG ₂₇	16.200	16.200	0.000
CBG ₂₈	16.200	16.200	0.000
CBG ₂₉	16.200	16.200	0.000
CBG ₃₀	16.200	16.200	0.000
CBG ₃₁	16.200	16.200	0.000
CBG ₃₂	16.200	16.200	0.000
CBG ₃₃	16.200	16.200	0.000
CBG ₃₄	16.200	16.200	0.000
CBG ₃₅	16.200	16.200	0.000
CBG ₃₆	16.200	16.200	0.000
CBG ₃₇	16.200	16.200	0.000
CBG ₃₈	16.200	16.200	0.000
CBG ₃₉	16.200	16.200	0.000
CBG ₄₀	16.200	16.200	0.000
CBG ₄₁	16.200	16.200	0.000
CBG ₄₂	16.200	16.200	0.000
CBG ₄₃	16.200	16.200	0.000
CBG ₄₄	16.200	16.200	0.000
CBG ₄₅	16.200	16.200	0.000
CBG ₄₆	16.200	16.200	0.000
CBG ₄₇	16.200	16.200	0.000
CBG ₄₈	16.200	16.200	0.000
CBG ₄₉	16.200	16.200	0.000
CBG ₅₀	16.200	16.200	0.000
CBG ₅₁	16.200	16.200	0.000
CBG ₅₂	16.200	16.200	0.000
CBG ₅₃	16.200	16.200	0.000
CBG ₅₄	16.200	16.200	0.000
CBG ₅₅	16.200	16.200	0.000
CBG ₅₆	16.200	16.200	0.000
CBG ₅₇	16.200	16.200	0.000
CBG ₅₈	16.200	16.200	0.000
CBG ₅₉	16.200	16.200	0.000
CBG ₆₀	16.200	16.200	0.000
CBG ₆₁	16.200	16.200	0.000
CBG ₆₂	16.200	16.200	0.000
CBG ₆₃	16.200	16.200	0.000
CBG ₆₄	16.200	16.200	0.000
CBG ₆₅	16.200	16.200	0.000
CBG ₆₆	16.200	16.200	0.000
CBG ₆₇	16.200	16.200	0.000
CBG ₆₈	16.200	16.200	0.000
CBG ₆₉	16.200	16.200	0.000
CBG ₇₀	16.200	16.200	0.000
CBG ₇₁	16.200	16.200	0.000
CBG ₇₂	16.200	16.200	0.000
CBG ₇₃	16.200	16.200	0.000
CBG ₇₄	16.200	16.200	0.000
CBG ₇₅	16.200	16.200	0.000
CBG ₇₆	16.200	16.200	0.000
CBG ₇₇	16.200	16.200	0.000
CBG ₇₈	16.200	16.200	0.000
CBG ₇₉	16.200	16.200	0.000
CBG ₈₀	16.200	16.200	0.000
CBG ₈₁	16.200	16.200	0.000
CBG ₈₂	16.200	16.200	0.000
CBG ₈₃	16.200	16.200	0.000
CBG ₈₄	16.200	16.200	0.000
CBG ₈₅	16.200	16.200	0.000
CBG ₈₆	16.200	16.200	0.000
CBG ₈₇	16.200	16.200	0.000
CBG ₈₈	16.200	16.200	0.000
CBG ₈₉	16.200	16.200	0.000
CBG ₉₀	16.200	16.200	0.000
CBG ₉₁	16.200	16.200	0.000
CBG ₉₂	16.200	16.200	0.000
CBG ₉₃	16.200	16.200	0.000
CBG ₉₄	16.200	16.200	0.000
CBG ₉₅	16.200	16.200	0.000
CBG ₉₆	16.200	16.200	0.000
CBG ₉₇	16.200	16.200	0.000
CBG ₉₈	16.200	16.200	0.000
CBG ₉₉	16.200	16.200	0.000
CBG ₁₀₀	16.200	16.200	0.000
Total THC	30.542%	30.542%	0.000
Total CBD	0.065%	0.065%	0.000

NEXT GENERATION FACILITY

Ongoing facility upgrades to ensure optimized product quality and yield.

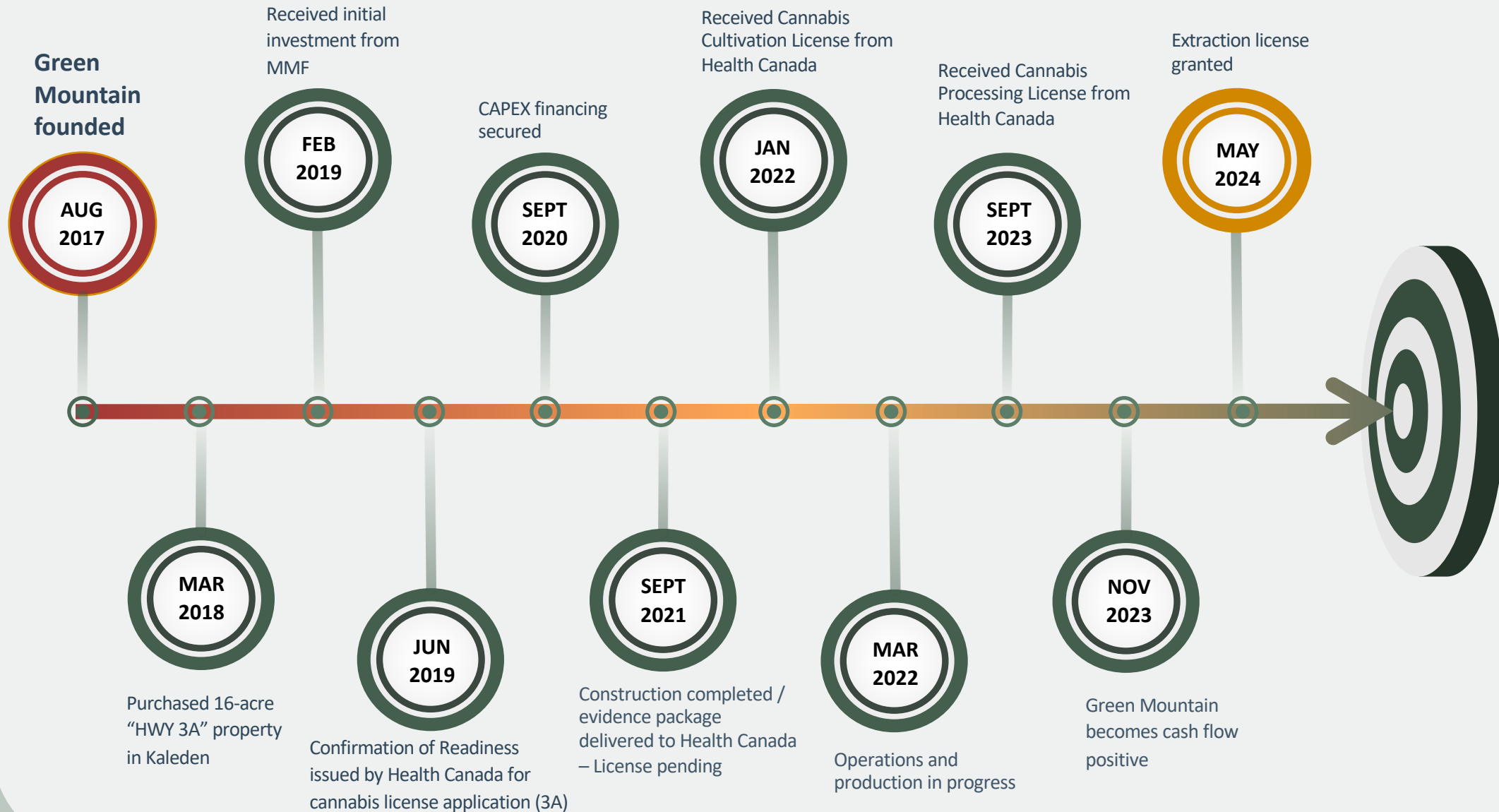
Focus on serving the Métis indigenous community comprising over 550,000 individuals.

EXISTING PATIENT BASE FOR MEDICAL DIVISION





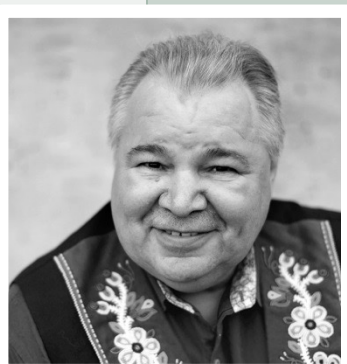
ACHIEVED MILESTONES





MEET THE BOARD

Highly educated, experienced professionals with track records developing businesses



DR. DAVID CHARTRAND
DIRECTOR/CHAIRMAN

Current and longest serving President of the Manitoba Metis Federation (27yrs). Established the Economic Development Organization (MEDO). Focused on improving the lives of the Metis community.



SALIL DHAUMYA
INTERIM CEO – FOUNDER

Salil is an accomplished and motivated leader. He holds a CPA designation and has over 20 years' public company experience specialized in the finance arena. Salil is leading the company's expansion into higher margin sales of processed products.



MICHAEL DUNKERLY
DIRECTOR – BUSINESS DEVELOPMENT

Extensive experience as a commercial lawyer (ex. Freshfields) and yacht broker (Entropia); two degrees (Law and Languages); well versed with start-ups and cannabis industry in Europe/Australia; multi-lingual.



RICHARD DEWINETZ
DIRECTOR

Business strategist and entrepreneur, former founder and sole owner of Merit kitchens with more than 200 employees (now divested), owner of Winmark Capital. Green Mountain investor.



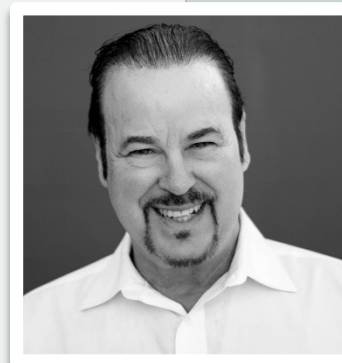
MEDICAL AND OPERATIONAL TEAM LEADERS

Recognized industry leaders in plant science, greenhouse production and medical cannabis for improved health



DR. VALANI

18+ years' emergency medicine experience, 10+ years' experience with cannabis. Peer reviewed author of 3 medical cannabis books. Associate Professor of Medicine and Pediatrics, McMaster University, Chief of Emergency Medicine and Medical Director, St. Joseph's Health Centre.



DR. GREG SMITH

25+ years as primary care medical doctor. Harvard trained. Medical cannabis practitioner since 2000. Author of numerous cannabis textbooks including first scientifically-based textbook educating medical students and professionals on cannabinoid medications.



DR. MIRZA

Dr Mirza is a member of the Alberta Agriculture Hall of Fame (2014). He is an educator, teacher and researcher with over 40 years' experience with greenhouse crop production. He has published extensively on cannabis in national magazine "Grow Opportunity" and has been invited as a panel judge selecting top cannabis growers.



FOCUSED INVESTMENT ALLOCATION

Improving Health / Improving Lives

Medical Division

- **Outdoor cultivation and processing expansion** on owned land at existing facility.
- **Health and wellness product platform** including sales of organic full spectrum oils and targeted nutraceutical formulations with novel delivery mechanisms.
- **Strengthening partnerships with leading medical experts and formulators** as well as our Indigenous and Pro-Athlete stakeholders



GREEN MOUNTAIN FAMILY

Broad and balanced shareholder base including individuals, corporations and family offices in **Canada, the US, the UK, Switzerland, Monaco, Spain, Greece, Cyprus and Singapore**

Shareholder business interests with potential cannabis product synergies include:

- Oil Refinery/Fuel Stations – More than 500 fuel/retail outlets – **Sublingual energy strips**
- Football Club – **Advertising/Product Promotion**
- Pro-Athletes (NBA All Star) – **Sublingual performance and recovery strips**
- Pharmaceutical Group – Market leader in the Balkans – **Product Development**
- Hotels – **Sublingual sleep strips**
- US Supermarket Chain – **CBD and Terpene Strips**





TIMING THE INVESTMENT OPPORTUNITY

Recreational Sales Division turns profitable Q4 2023

Fast-developing industry scheduled for continued expansion into 2030 and beyond

Highly motivated and committed Management team

Extraordinary Shareholder Base with potential for multiple synergistic collaborations

Cultivation, Operations, Legal and Financial Management Expertise

Academic approach driven by Key Performance Indicators

Medical Division Expansion Program with sizeable patient base





CONFIDENTIALITY AND DISCLAIMER

FORWARD LOOKING STATEMENTS

The information contained herein contains “forward-looking statements” within the meaning of applicable securities legislation. Forward-looking statements relate to information that is based on assumptions of management, forecasts of future results, and estimates of amounts not yet determinable. Any statements that express predictions, expectations, beliefs, plans, projections, objectives, assumptions or future events or performance are not statements of historical fact and may be “forward-looking statements.” Forward-looking statements are subject to a variety of risks and uncertainties that could cause actual events or results to differ from those reflected in the forward-looking statements. Investors are cautioned against attributing undue certainty to forward-looking statements. These forward-looking statements are made as of the date hereof, and the Company does not assume any obligation to update or revise them to reflect new events or circumstances. Actual events or results could differ materially from the Company’s expectations or projections.

NO WARRANTIES

We believe the information contained in this document is accurate as of the date of this presentation. This information is subject to change at any time as we are a new company. The statements, estimates, and projections as to the future revenues and results of operations by Green Mountain Health Alliance Ltd. ("Green Mountain") are based upon estimates of our management. Other information contained in this presentation are derived from the public domain from sources such as the Canadian Government, from various public company websites, and other information sources found through research on the internet. If you are reviewing this document you should not construe its content as legal, tax or investment advice. All dollar amounts referred to are Canadian \$ unless otherwise noted.

STATEMENT OF CONFIDENTIALITY & NON-DISCLOSURE

This document contains proprietary and confidential information. All data submitted is provided in reliance upon its consent not to use or disclose any information contained herein except in the context of its business dealings with Green Mountain. The recipient of this document agrees to inform its present and future employees and partners who view or have access to the document's content of its confidential nature. The recipient also agrees not to duplicate or distribute or permit others to duplicate or distribute any material contained herein without Green Mountain's express written consent. By acceptance of this document, the recipient agrees to be bound by the aforementioned statement.

COPYRIGHT

You may not copy, reproduce, recompile, decompile, disassemble, reverse engineer, distribute, publish, display, perform, modify, upload to, create derivative works from, transmit or in any way exploit any part of this material, except that you may use for your own personal, non-commercial use. The analysis and presentation included in this material may not be re-circulated, redistributed or published without our prior written consent. Modification of the materials content would be a violation of our copyright and other proprietary rights. Green Mountain retains all title, ownership and intellectual property rights to the material and trademarks contained herein, including all supporting documentation, files, marketing material, and multimedia.



GET IN TOUCH

Salil Dhaumya

sdhaumya@gmtn.ca

Michael Dunkerly

mdunkerly@gmtn.ca

Green Mountain

760 Hwy 3a, Kaleden/Okanagan Falls,
BC, V0H 1K0

 **Green Mountain**

www.gmtn.ca

